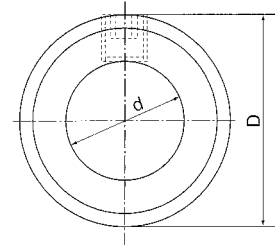
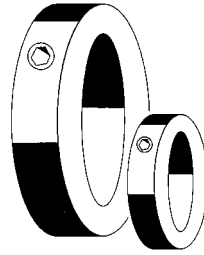
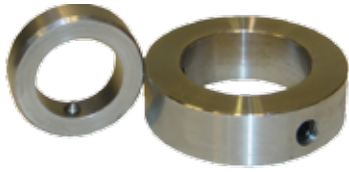


Stelringen



Stelring DIN 705 (afmetingen in mm)

d	D	breedte	gewicht (kg) per 100 stuks
4	8	5	0,152
5	10	6	0,280
6	12	8	0,548
7	12	8	0,488
8	16	8	0,940
9	18	10	1,510
10	20	10	1,850
11	20	10	1,730
12	22	12	2,520
13	22	12	2,520
14	25	12	3,170
15	25	12	2,980
16	28	12	3,840
17	28	12	3,840
18	32	14	6,000
20	32	14	5,300
22	36	14	6,900
24	40	16	10,000
25	40	16	9,560
26	40	16	9,050
28	45	16	12,200
30	45	16	11,100

d	D	breedte	gewicht (kg) per 100 stuks
32	50	16	14,5
34	50	16	13,2
35	56	16	18,7
36	56	16	18,0
38	56	16	16,6
40	63	18	26,1
42	63	18	24,4
45	70	18	31,7
48	70	18	28,7
50/52	80	18	42,0
55/56	80	18	38,0
58/60/63	90	20	58/55/50
65/68/70	100	20	71/66/62
72/75/80	110	22	93/87/77
85/90	125	22	113/101
95/100	140	25	161/147
110/120	160	25	206/171
125/130	180	28	285/264
140/150	200	28	347/298
160	220	32	446
170/180	250	32	657/590
190/200	280	32	831/756

Stelring DIN 703 (afmetingen in mm)

d	D	breedte	gewicht (kg) per 100 stuks
20	40	20	14,6
24/25/26	56	22	34/34/33
28/30/32	63	22	43/42/40
34/35	70	22	51/50
36/38	70	22	49/47
40/42	80	28	83/80
45/48	80	28	75/71
50/52	90	28	96/93
55/56	90	28	87/85

d	D	breedte	gewicht (kg) per 100 stuks
58/60	100	28	114/110
63/65	100	28	104/100
68/70	110	32	147/141
72/75	110	32	135/127
80/85/90	125	32	181/165/148
95/100	140	32	208/189
110/120	160	32	265/220
125/130	180	36	370/342
140/150	200	38	475/407